

The grand ESCAPE

A SUBURBAN BEAUTY, THIS HOME IS THE
ULTIMATE RETREAT FOR THE WHOLE FAMILY



BY HASMITA AMTHA • PROJECT CONSULTANT IONA O'REILLY
PROPERTY COORDINATOR MARLIZE DU RAND • PHOTOGRAPHER NIC BALETA



Unassuming from its simple and sleek exterior, this expansive triple-storey property comes across as a contemporary family home in the suburbs. However, there's nothing ordinary about this home. With exquisite interiors showcasing the beauty of detail, this home is a true reflection of the home owners' discerning taste in design.

"A home is where we comfortably and safely live as a family. It's where we feel at peace and where we can rest. It is a special place filled with warmth, light and peace," highlights the owner. Inspired by these emotions, the owners sought to capture these elements in this new build. They share: "With this home, we were involved throughout the process, from the design to choosing >

"The dining area brings the whole family together."
- the home owner



EEZI QUARTZ 011 822 1350

ABOVE: If it's durable for the kitchen, why would your dining area be any different? Eezi Quartz is not only stylish and affordable, but the durable nature of the stone makes it perfect for high-traffic zones like your cooking and entertaining areas. Being non-porous, Eezi Quartz is easy to clean and comes in a variety of both modern and classic designs. Seen here is the classic marble-inspired Bianco Statuario, cleverly utilised to create a show-stopper dining room table using two slabs of Eezi Quartz.

PORSCHE SOUTH AFRICA 011 540 5000

The iconic 911 Porsche range now includes the sporty GTS models. This more powerful and visually distinctive 911 Carrera GTS generation, with better driving dynamics than ever, is available for sale. Its six-cylinder boxer engine delivers 480 PS (353kW), which is 30 PS (22kW) more than the current 911 Carrera S and the previous 911 GTS. All 911 GTS models have the Sport Design package, with distinctive trim for the front, rear and side sills. Sleek sophistication and a smooth driving experience make this sports car a driver's dream.



THE KITCHEN AND GRANITE STUDIO 031 462 7722

ABOVE: For this home, the owner wanted an elegant design for the wine cellar. The brief required beautiful details, such as the seated tasting area in the centre of the room. It was important that the design complemented the rest of the home. The Kitchen and Granite Studio materialised this exquisite space, which features sawn oak veneer with a Rehau German acrylic accent colour on the cabinetry and matt black floating wine racks in solid oak with an open grain finish.

RIGHT: Warm and inviting, the design of this home showcases the beauty of detail. Responsible for the interior design of this property, Studio Roux met the owner's brief for an impressive interior that was not only practical for family living, but also comfortable for entertaining guests. The interior firm used primary accent colours to create interesting focal points.

specifics like lighting and interior fittings, unlike the house we lived in previously. We worked with an interior designer who selected essential and decorative items and made the spaces functional, safe and beautiful."

Ensuring their home was the ultimate escape for the whole family, the property boasts spacious indoor and outdoor entertainment areas, such as a fully equipped home theatre room and a beautiful garden with a boma and Olympic-like swimming pool.

The home features many unique spaces, but the dining space, in particular, stands out.

"The dining area brings the whole family together. The open-plan design of the kitchen allows you to cook, but still be part of the fun when entertaining guests or chatting with the kids. >

STUDIO ROUX 073 185 4833



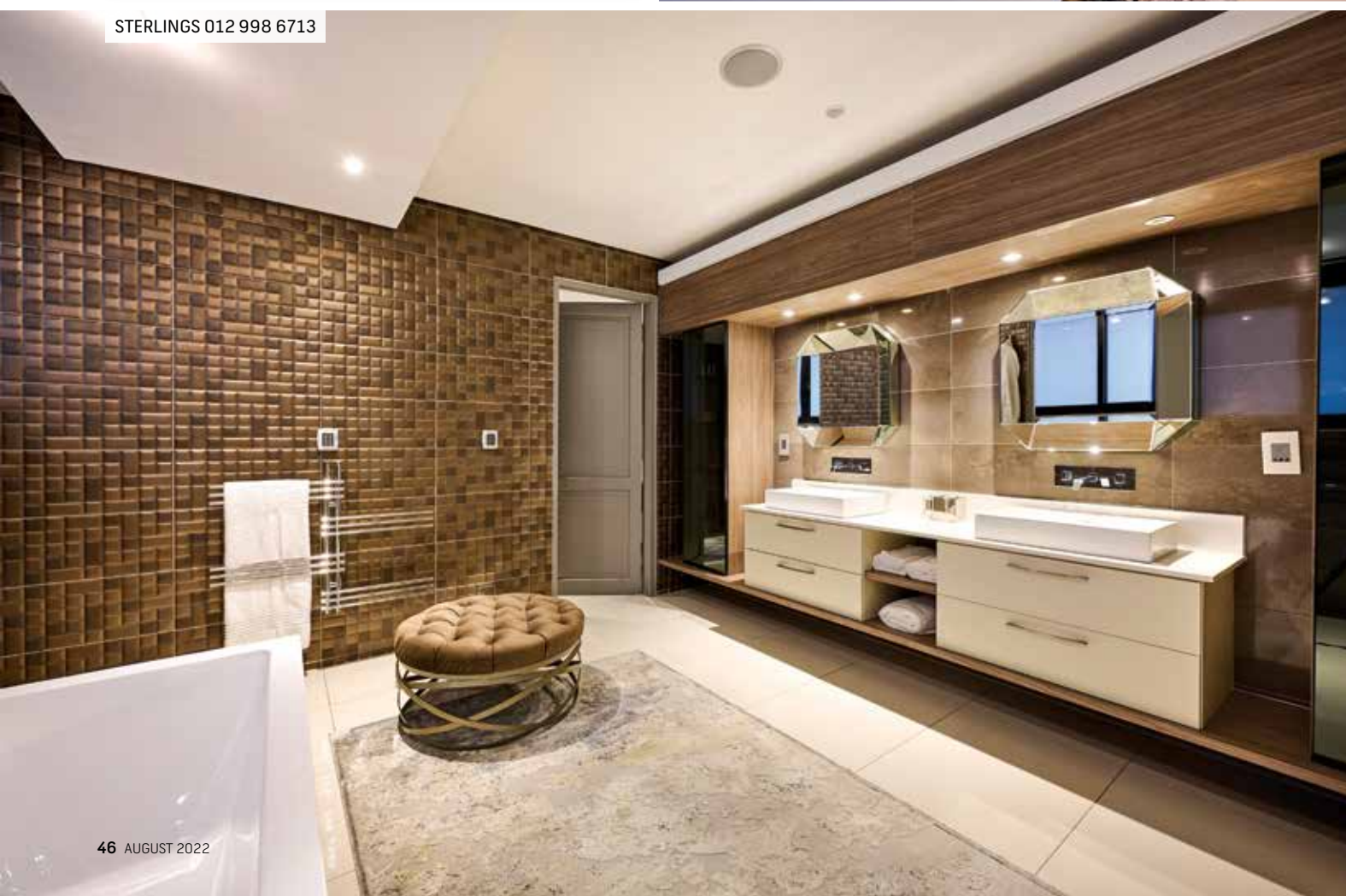


“We wanted to make a statement with this open area of the house.”
 – the home owner

BELOW: Sterlings specialises in imported Italian kitchens, built-in cupboards, tiles, sanitaryware and furniture. For this home, the design team at Sterlings used a 3D bronze tile, which is so seamless that it gives the impression of 3D wallpaper. This feature brought in the element of warmth, balancing the coolness for which tiles are known. This was paired with a glossy earth-toned tile, which had some movement in the design, but not so much as to overpower the feature tile.



STERLINGS 012 998 6713



“The space is more sociable. We wanted to make a statement with this open area of the house. We specifically designed the area to cater for a buffet-style dinner, with two side tables near the dining table for serving. This prevents guests from going into the kitchen.”
 Grand in every sense, this home is a luxury escape for everyone who enters the front doors. 🏡

CONTACTS:

EEZI QUARTZ – quartz surfaces
 011 822 1350, eeziquartz.co.za,
 Instagram: @EeziQuartz

PORSCHE SOUTH AFRICA – official Porsche partner in SA
 011 540 5000, queries@porsche.co.za,
 www.porschesouthafrica.com

STERLINGS – kitchen and bathroom design
 012 998 6713, living@sterlings.co.za,
 www.sterlings.co.za

STUDIO ROUX – high-end residential design
 073 185 4833, charlet@studioroux.co.za,
 www.studioroux.co.za

THE KITCHEN AND GRANITE STUDIO – cabinetry and work surfaces
 031 462 7722, ravin@kitchenstudio.com